

## Create a mask layer

1. Create a new layer and rename it mask.
2. Create another layer and rename it text.
3. Click the Rectangle tool (Ether Oval tool or Rectangle tool is OK based on what shape you want the window to be.)
4. Click the Fill Color tool on the Tools panel, then click the green color switch in the left column of the color palette.
5. Draw a rectangle, and the rectangle will be the window. Drag it where you want the window to be. Insert on the menu bar, point Timeline, then click Create Motion Tween.
6. Insert a keyframe in Frame 40 on the mask layer.
7. Click the mask layer on the timeline to select it, click Modify on the menu bar, point to Timeline, then click Layer Properties.
8. Verify that the Show check box is selected in the Name section, click the Lock check box, click the Mask option button in the Type section, then click OK.

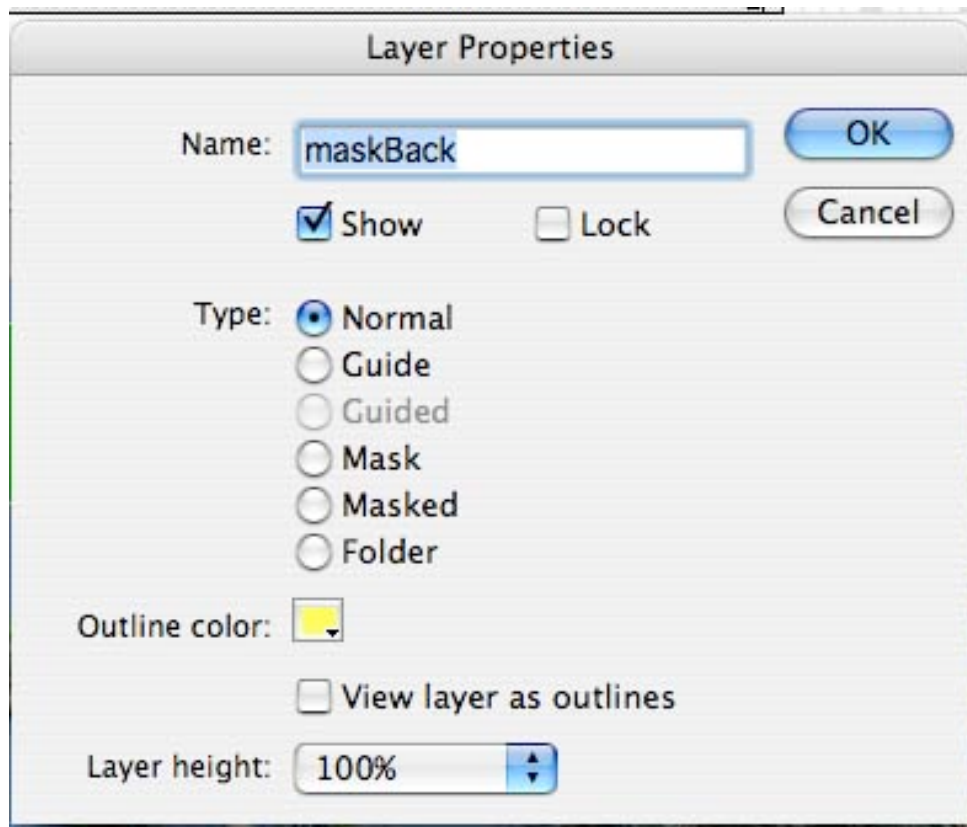


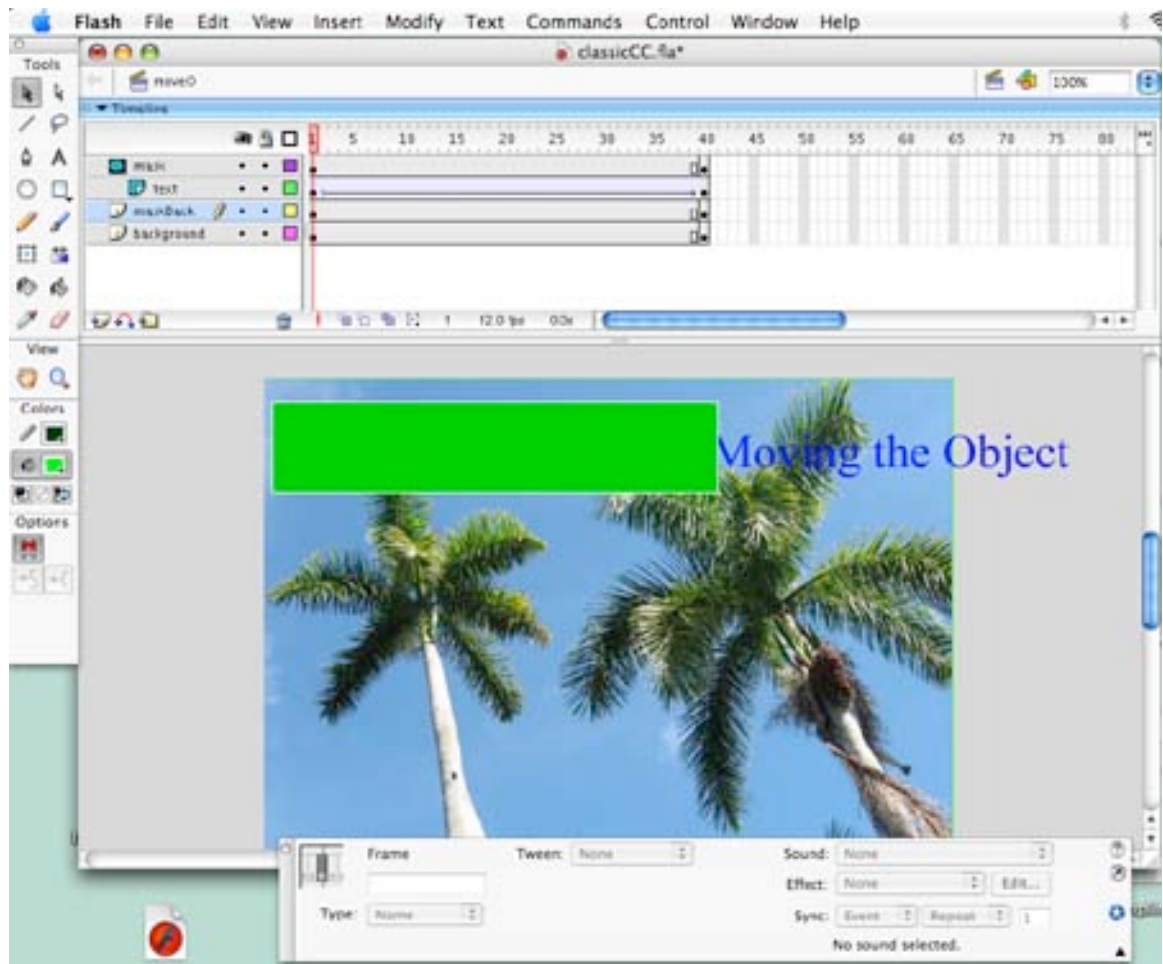
Figure 1

9. The mask layer has a shaded mask icon next to it to on the timeline.  
(See Figure 2)
10. Play the movie and notice how the text moves across from one side to the other side within the rectangle window.

### Create a masked layer

1. Click the text layer to select it, click Modify on the menu bar, point to Timeline, then click Layer Properties to open the Layer Properties dialog box.
2. Verify that the Show check box is selected in the Name section, click the Lock check box, click the Masked option button in the Type section, compare your dialog box to Figure 2, then click OK.

The text layer appears indented and has a shaded masked icon next to it on the timeline. (See Figure 2)



(Figure 2)

3. Play the move and notice how the rectangle object acts as a window to display the text on the text layer.
4. Any layers with indented masked icon below the make layer will be affected.